

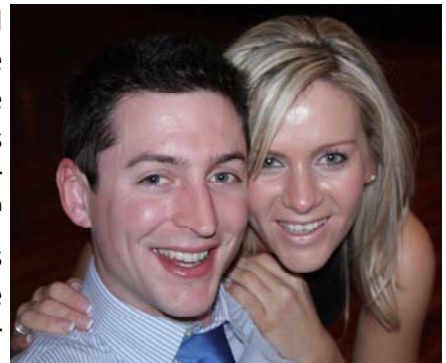


some exciting mimmic news....

The next 3 months will be jam-packed with excitement and happenings for Michelle and me!!! WEDDINGS and more WEDDINGS. In fact two in one family in 3 months! Michelle got engaged to Tyrone Grúner on the 20 July this year and is



in the midst of planning her dream wedding for the 15th December 2010. John, my son is getting married to Simone Shelley on the 16th October 2010 and in between all these weddings we are trying very hard to run the studio efficiently!!!



The studio will be **closed on Friday 15th October** as both Michelle and I will be away for John's wedding.

new pewter pendant kit



The Bead Book magazine approached Mimmic a few weeks ago and requested that we provide them with an article on step by step instructions to create a pewter pendant. The magazine is on the shelves this week and will be on sale in our studio as well.

We have created a stunning kit containing cut-out templates, pewter, tools and excellent instructions to create this gorgeous pendant. Kits are available at our studio or from our website for **R130**

This kit makes a great gift for Christmas or birthdays!

LOOK OUT FOR: A full range of pewter pendant kits which will be available in 2011.



the winner of 'story attached' is...

"For Christmas last year I thought I would make a cocktail tray with liquid glass for my Dad. I painted the tray and found the perfect design. I had to modify the design and add a boarder on the sides to fit the tray. The Pewter came out beautifully and fitted so well in the tray. I added the liquid glass and everything was working out so well. Unfortunately my pewter was raised a little too high and I had to add more liquid glass. I had managed to find a similar product from a craft store which was slightly cheaper and used this to add to my tray. I wanted to cry when it did not cure properly and I landed up throwing the whole tray away pewter and all. Needless to say my Dad never got his Christmas present and I learnt a very valuable lesson that no matter what, never compromise on quality. Yvonne Botha

We felt Yvonne's 'pain' when we read this story and knowing how much time and patience has gone into this beautiful cutting out, we decided Yvonne would make a good winner for this newsletter! Please contact Michelle in order to receive your R200 gift voucher.

We will run this competition in every newsletter in future. Please send us a photo of an original piece of pewter work created by you with a story attached. If you are chosen as a winner we will share your story in our future newsletters and you will receive a Mimmic Gallery & Studio R200 gift voucher.



tip of the month

Pratliglo is very easy to use BUT the instructions must be followed exactly!!!

- If the contents of the two bottles are not mixed absolutely thoroughly the mixture will not set.
- Always pour the mixed contents into a 2nd clean paper cup, give a last good mix and then pour into your tray.
- Use a flat ice cream stick to mix (not a round one).
- Don't beat the mixture, rather stir scraping the sides firmly.
- In order not to have to use too much Pratliglo, try and create a low relief design. Should you do a high relief work, an enormous amount of mixture has to be used to cover all the raised areas properly, making it an expensive and heavy tray.



ar-

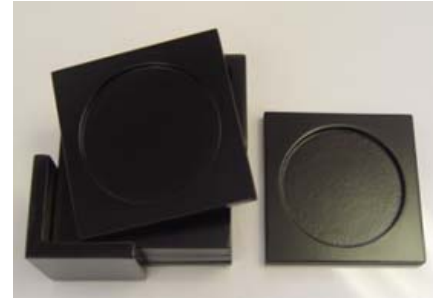
- Check for bubbles ½ hour after pouring. If there is any gaps under your pewter, air pockets sometimes form and escape a while after you have poured your Pratliglo. There is nothing worse than checking your beautiful tray a couple of hours or days later to find burst air bubble imperfections in your Pratliglo!

new boxes



box frames

We can't keep up with the orders for these stunning frames. A small piece of pewter beautifully done and set in the middle of the indent of these frames, makes for the most beautifully décor piece.



Coasters

We have added gorgeous coasters to our range of wooden products. They come in a set of six in a holder. The coaster and or the holder can have pewter added to it.



rectangle tea box

We have re-introduced the original shape tea boxes for those people who love doing tea pots. boxes accommodate the shape of the teapot designs which everyone loves doing. The tea boxes come in two sizes, a 4 division and a 6 division.



workshops

Please note these will be the only workshops available until next year when we plan to re-lease some exciting new ones.

Please take note of the workshop booking procedure:

- Enquire about booking for relevant workshop via the web or email.
- Michelle will confirm an available seat for your chosen workshop and send you an invoice. This seat will be held for 48 hours in order for you to make payment.
- Please pay the required amount or deposit via direct transfer. (Do not make payment without invoice.)
- Michelle will send you confirmation of your seat and send you final details.
- Please note: We cannot hold seats indefinitely for a workshop if a deposit or payment has not been made.

beginner workshop

The Beginner Workshop is an intensive hands on workshop. The price includes:

Starter Kit:

- Impressions in Metal - Instruction & Design Book
- 1/4 m pewter
- 13 Imported Tools
- 2 Paper Stubs
- Consumables - Lubricator, Cleaner, Patina & Polish
- Mug of wax plus dropper
- Felt, polish cloth, fibre & gloves

A6 Book (Morning project)

Box (Afternoon Project)

Coffee, tea, morning muffins, and lunch

Content of course:



In the morning you will complete a book cover, learning low relief, high relief, various other techniques and understanding the full process of pewter repoussé.

After lunch you will create an intermediate project, which will contain various extra skills, techniques and tool use.

At the close of the workshop you will be equipped with tools and knowledge to begin the addictive, creative journey of pewter repoussé. PLUS you will be homeward bound with two stunning completed items to show friends and family!

Please remember when booking for your beginner workshop, should you have bought a beginner kit prior to the workshop, that you make note of this on the form. The cost of this beginner kit (R850) will be deducted from the cost of the course.

COST: R1500 inclusive of kit **OR R650** if you have purchased the kit prior to the workshop.



face workshop

Learn to cope with faces, understanding the logics of a realistic look. Once you have mastered a face you can tackle anything in pewter. Learn the basic step by step approach to completing a face. Mount the completed face and set inside a beautiful frame. Take home a completed FRAMED pewter work created by yourself for the price of a boring framed photo, as well as the knowledge gained to be able to create many beautiful pewter faces thereafter!



A very important technique workshop!

Level: Intermediate.

Cost includes mount board, frame and relevant patterns. **Bring your tool kit and pewter or purchase at the studio.**

COST: R340

dress workshop



Create a realistic 3D sculpture pewter dress, hanging on a coat hanger, mounted onto mount board and framed in a beautiful frame ready to hang on your wall. Take home a completed FRAMED pewter work of art created by yourself for the price of a boring framed photo, as well as the knowledge gained to be able to create many beautiful pewter sculptured items thereafter!

A very important technique workshop! Intermediate.

Cost includes pattern, frame, mount board, instruction, coat hanger hook, fabric rose. **Bring your tool kit and pewter or purchase at the studio.**

COST: R340

studio hours

The studio hours are as follows:

Monday - Thursday: 8:00 - 16:00

Friday: 8:00 - 15:30

Please note, we are not open on Saturday's, unless there is a Beginner Workshop, which is once a month. Please check our workshop dates to find out which Saturday we will be open.

weekly classes

Tuesday or Wednesday mornings

Our weekly morning classes are held in our studio where students work at their own pace on their own projects under our watchful eye and helping hand. The classes are relaxed and fun. In this environment creativity flows freely. The coffee/tea is on tap and there always seems to be someone willing to fatten the class up with cake or eats. Friendships are formed and networks are developed. These classes are very social



and a hoard of fun while still maintaining a high standard of creativity. Booking in advance for these classes is necessary as they fill up very quickly. **Bring your kit, tools and whatever you are working on.**

COST: R120 9am -12noon

product hunt

Mary Ann will be away in Orlando & Miami for the first two weeks in November. She is on the hunt for new products and is hoping to come back with exciting stuff for 2011. Therefore there will be no classes on 2nd, 3rd, 9th & 10th November.

Please return our booking form as soon as possible to avoid disappointment.

Happy pewtering to all of you – don't forget to send in a story and photo of your work to win a R200 gift voucher!

There will be one last newsletter towards the end of November with closing dates of the studio for end of year holidays.

Take care!

Mim and Mic

MIMMIC Gallery & Studio reserve the right to change dates, prices and content of workshops, classes and tools at their discretion. To remove your name from our mailing list, please [click here](#). Questions or comments? E-mail us at info@mimmic.co.za

CaigCor House
130 Boeing Road East
Bedfordview, Gauteng
South Africa
2007

"Creating is our work....
Our passion....
Our life-long obsession."

www.mimmic.co.za

Phone: +2711 574 5310
Fax: +2711 574 5311
maryann@mimmic.co.za
michelle@mimmic.co.za
orders@mimmic.co.za